



北京国际
首饰展
之北展

CRA
CULT



The FERROcity exhibition lecture
presented at the Beijing International
Jewellery Biennale October 2019

Presented by Professor Stephen
Bottomley (Exhibition Co-curator)

Text by Mike Holmes, independent
curator/ Velvet Da Vinci Gallery USA



BIRMINGHAM CITY
University

School of
Jewellery

Ferroc**ity**

A contemporary exhibition of ***iron in the city***.

Jewellery and objects by twenty-two contemporary makers displayed alongside gemmological samples and photography that explores the interpretation and influence of Iron as catalyst, material and fundamental element of life. The exhibition is co-curated by Elizabeth Turrell and Stephen Bottomley from the School of Jewellery, Birmingham City University.

The selection of contemporary metalwork and jewellery, ranging from steel vessels to recycled iron nail jewellery, will present a range of approaches to this fascinating but familiar material and includes work by ten practicing artists and academic staff from Birmingham's eminent School of Jewellery and ten invited international artists, as well as work by both curators. The photography has been taken on microscopes and commissioned from the school's own Gemmology department and captures the transformative effect iron has on the colouration of gemstones.

"Iron is a material that has become synonymous with human life and civilisation and as such has become embedded in both our language and understanding of the world"



*Dauvit Alexander
Marianne Anderson
Jivan Astfalck
Stephen Bottomley
Tim Carson
Rachael Colley
Bettina Dittlmann
Christine Graf
Joohee Han
Kirsten Haydon
Jeremy Hobbins
Michael Jank
Bridie Lander
Anna Lorenz
Sarah O'Hana
Drew Markou
Toni Mayner
Simone Nolden
Jo Pond
Jo Pudelko
Rebecca Steiner
Elizabeth Turrell*

Jewellery and objects by twenty-two contemporary makers displayed alongside gemmological samples and photography that explores the interpretation and influence of Iron as catalyst, material and fundamental element of life.

A selection of contemporary metalwork and jewellery, ranging from steel vessels to recycled iron nail jewellery.

11 practicing artists and academic staff from Birmingham's eminent School of Jewellery and 11 invited international artists

In February and March 1999, Museum Reich Der Kristalle (Kingdom of Crystals), the public part of the Mineralogical state collection Munich hosted FERROcity an exhibition of jewelry and objects inspired by the theme of Iron. Iron is considered as mineral, chemical element, building material, a part of every human body. Iron as idea.

As part of the 2019 Munich Jewelry Week network of exhibitions the venue proved to be an inspired environment for the objects on display. The jewelry and sculptural pieces were constructed with a variety of materials in addition to iron and steel and their showing alongside mineralogical specimens from the Museum's permanent collection strengthened the theme of the exhibition. Even for the many metalsmithing artists attending the exhibition it was a good reminder of natural occurring examples of metal.



Elizabeth Turrell & Stephen Bottomley Curators

Museum Reich der Kristalle
 Mineralogische Staatssammlung München
 Theresienstraße 41, 80333 München,
 Germany
 21st February - 16th March 2019



Dr Melanie Kaliwoda (right)
 Museum Curator



In showing the FERROcity pieces at this venue the objects become fellow specimens or artifacts with the minerals of the Museum inviting close observation. The objects were displayed alongside microscopic images capturing the transformative effect iron has on the coloration of gemstones.



Image | Hematite platBotryoidal hematite
crystallets in feldspar variety sunstone



Image | Colour zoning in sphalerite with fractures,
and unknown primary inclusions



Image | Pyrite inclusions in picture quartz



Image | Iron oxide 'beetle leg' inclusions in
strawberry quartz

Miranda Wells
Microscope images
Photos: BSC Gemmology, School of Jewellery

Bettina Dittlmann and Michael Jank explore iron in its most raw and pure state with their brutally forged 'FOREVERRINGS'. German blacksmiths call this metal "Butter-Iron" for its ease of use but it is clear that these rings were formed with some strong deliberate force. The hammer marks have forged forms inspired by shapes of uncut raw pyrite and garnet.



Michael Jank and Bettina Dittlmann

2 x Forever rings

3.5 x 3.,5 x 3.5 mm

Dittlmann's 'Black Ephemeral Flower' brooch uses recycled iron particles from a bell foundry reacting to a magnet inside the brooch to form the pattern of the "bloom". The loose iron pieces would fall off the brooch without the magnet... the "petals" reforming in reaction to the magnetic field.



Bettina Dittlmann

'Black Ephemeral Flower' brooch

Iron and magnet

Timothy Information Limited uses the power of magnets with his half-cheery 'The technicolor flies will eat us all' badge. Brightly painted magnetic flies move about a steel box reminding us that no matter how we color it the flies will get us all in the end. His 'Nostalgia for an even sunnier past' badge looks back at a carefully crafted but now encrusted-in-rust steel circle form that reads "Turned Out Nice Again"... Well, maybe... maybe not.

Timothy Limited /Tim Carson

‘This idea didn’t work’ (object, 2019)

Mild Steel Shim 60mm (H) x 60mm (W) x 60mm (D)

‘The technicolor flies will eat us all’ (badge, 2009/2019)

Mild Steel, Stainless Steel, Magnets, Brass,
Powdercoat 65mm (H) x 80mm (W) x 30mm (D)

‘The redundant working machine’ (badge, 2008/2019)

Mild Steel, Stainless Steel, Chrome, Brass 85mm
(H) x 75mm (W) x 30mm (D)

‘Nostalgia for an even sunnier past’ (badge, 2019)

Mild steel

Mild Steel, Stainless Steel 75mm (H) x 75mm (W) x
20mm (D)



The idea that steel and iron are permanent and unchanging is challenged by many of the pieces in the FERROcity exhibition. Rust and disintegration is the end for all steel and iron. How long that process can take depends on how much care and maintenance one is willing to give. Jeremy Hobbins's holds a permanent patina of time ,as well as a satirical references Man Ray's 1921 non functional surrealist object titled 'Cadeau'.



Jeremy Hobbins

The Present

Cast Iron, Plastic and Copper

140x100x100

Recycling and repurposing of steel is shown by several of the participants in the exhibition. Jo Pond's poetic printed steel tins reflect Time's passing and an object's history of use or discard. The carefully fabricated brooch groups are formed from domestic bake ware, biscuit and medicine tins that serve as visual references for the feminine domestic role of the wartime wife and mother.

Glaxo Set

steel, iron, silver,
gemstones



Dauvit Alexander “repairs” broken found steel bolts with cast-in-place sterling silver replacements are studded with gemstones.





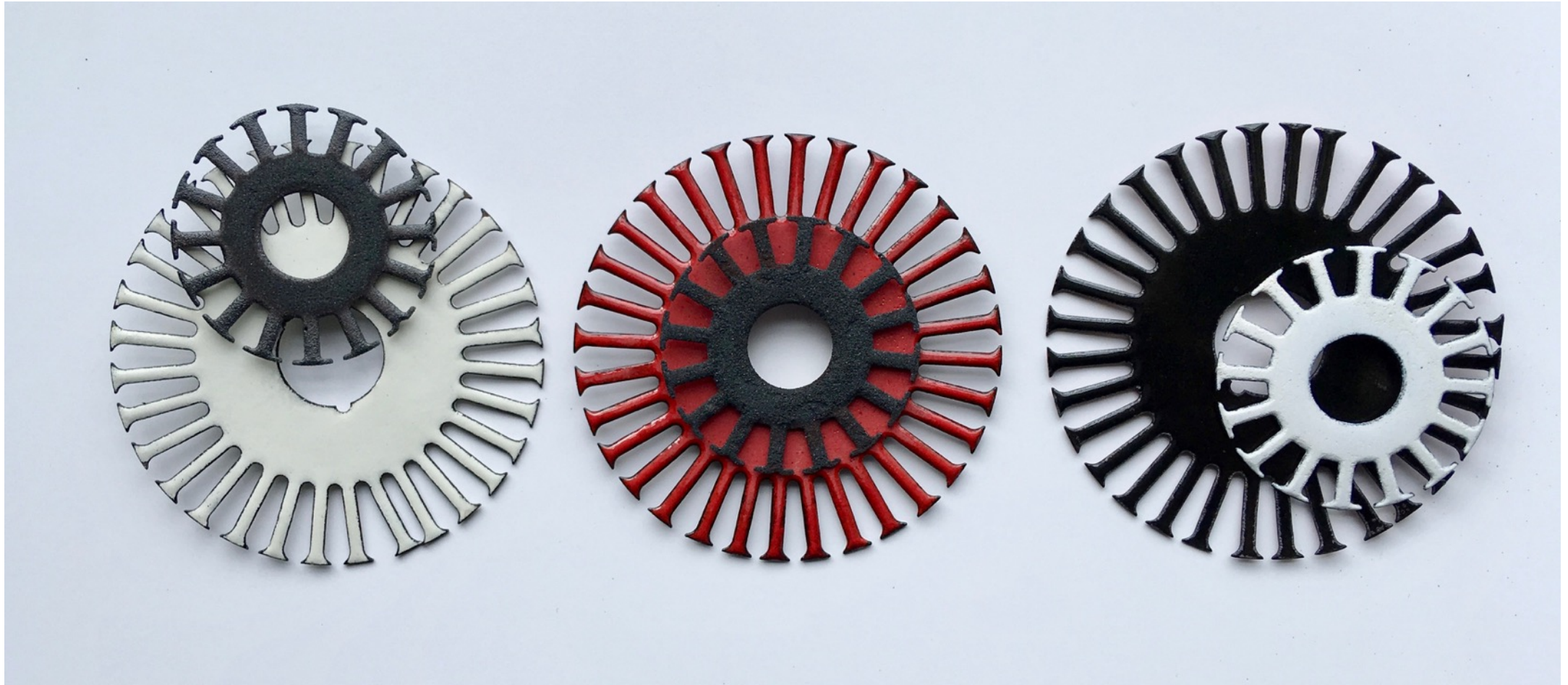
Dauvit Alexander

Sig Nuts

3 x rings

corroded pre-cut iron nuts; white metal and rough stones

Elizabeth Turrell's 'Widget' brooches are made from rusty pieces found in scrap yards in Germany and the United States. Turrell's enamelled reclaimed industrial forms convey a sense of exuberance and movement.



Elizabeth Turrell

3 Brooches/Badges

Title: *Widget*

Materials: *found* steel with vitreous enamel & iron spangles

90mm Diam

Sarah O'Hana's 'Obra VI ' building site series transform iron and wood scrap from the reconstruction of an old villa into a reliquary of one life gone. The renovation of the home leads to new life to come.

Sarah O'Hana
Obra VI Brooch
white metal, reclaimed
wood with steel nail,
polymer mineral,



The processes of construction and decay are the subject of Anna Lorenz 'Stages' objects. The cube crystal structure of iron is fabricated in mild steel and reflects the building blocks of industrialized society. The once perfect cubes become oxidized and corroded.



Anna Lorenz

Stages

15 steel cubes in stages of disintegration,
14mm square

Photographic image background 40x 40cm
approx



The ubiquity of steel and iron in our daily lives is shown in Christine Graf's set of 16 small square brooches. Each piece with an identical frame showcase photographs of urban life. Images of drain covers, railway tracks, street lamps, cars and bicycles preserve the urban jewellery of everyday life.



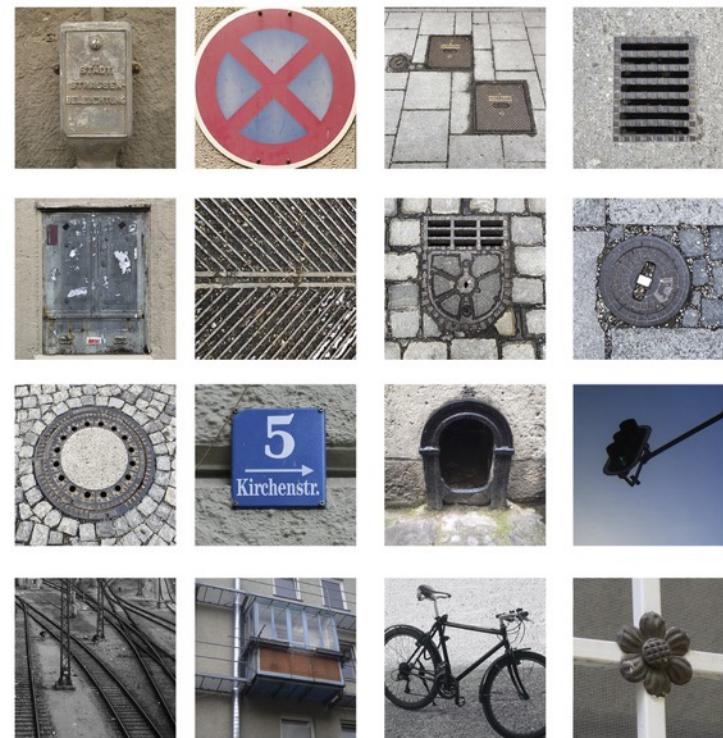
Christine Graf

Iron marks

9 x brooches, 2019

silver, photographs, stainless steel pin

30mm x 30mm x 5mm



Drew Markou's steel and concrete '3 Towers' remember the grand gasometers of the industrial revolution. Now an anachronism these urban relics now stand functionless except for many as decorative adornments left on the landscape.



Drew Markou

Tower Necklace/object

50mm Diam x 40mm Height Material: Mild Steel, Jesmonite with steel powder, nylon cord)

Just as iron is vital to the construction of modern life so is iron in the human body. Bridie Lander uses an illustrated diagram of the haemoglobin molecule in her brooches that are a visual link to the body. The iron containing protein is responsible for carrying oxygen throughout the body and gives blood its red color when mixed with oxygen.

Bridie Lander

Haemoglobin Molecule

brooch 1

Mild steel, white metal

Haemoglobin Molecule brooch 2

Copper, enamel + iron filings

50mm x 40mm



Rachel Colley finds non-mineral sources of iron in the food we eat. The mango stones in her 'Tongues' neckpiece are encased with pigmented leather seeking to "re-connect with our internal organ's processes of consuming food... essentially, 'wearing' metals from within."



Rachael Colley

Tongues

mango stones, hematite (iron oxide) pigmented leather, hematite cabochon, iron, bamboo

260x320x35mm. Ovoid spoon

While iron is a necessary mineral for many of the body's functions, including sight, too much iron can be toxic. Stephen Bottomley's 'Watcher' badges illustrate potential loss of vision his Father battles and reflects the crucial part iron has in our blood for sight. The recycled steel watch cases are enamel badges depicting the human eye. The eye's symbolism in art is "a ward from evil, a symbol of surveillance or simply a symbol of a shared humanity".



Stephen Bottomley

Watchers

Badges x 6

SSteel, enamel and nickel, 40mm Diam x 8mm

(Right display in Beijing)



- She has an Iron will He has an Iron constitution
- We have a steely resolve They have an Iron grip
- I have nerves of Steel Swords become Ploughshares.
- The Iron Curtain was torn down

The durable nature of Iron pervades our language. Iron is supposed to be strong and unyielding but iron will also rust and break. There are steel surgical tools that save lives and iron shackles that enslave. Jivan Astfalck's 'Of Iron Will and Roses' group of objects looks at the dual nature of iron and ideas of gender. The image of Jeanne D'Arc on the hallmark of a set of knives shows the ultimate warrior wrapped in steel armour. She is strong AND feminine. A brooch featuring a found 1940's photo of an actress playing Jeanne and a plastic rose bring a counter-balance to the iron, both symbolically and also aesthetically to the assemblage.



Jivan Astfalck

Of Iron Will and Roses

Six knives: iron & horn Brooch: Jean D'Arc - sterling silver & resin Brooch: Rose -- silk, silicon & white metal

Approx.:300x300 mm

Kirsten Haydon's 'Studies of Sand : Iron scapes' series of brooches incorporate black iron sand from the Taranaki region of New Zealand. The iron sand formed by volcanic activity 2.5 million years ago creates the black on black enamelled images of beach landscapes.



Kirsten Haydon

Iron scapes

Brooches

Mild steel, enamel, stainless steel, Kariotahi iron sand

55x55x7mm Approx



Jo Pudelko's pieces comment on the dangerous sea crossings undertaken by many desperate refugees. The rusted forms recall life-preservers or unseaworthy rafts.



Jo Pudelko

Cylinder Necklace

Jesmonite & Iron

8x8x5.5 cm not incl. cord

While Toni Mayner references iron and the earth as both an origin and final resting place of life and death.

Toni Mayner
Pendant

‘Of this earth II’ 2019
Re-claimed Iron Barrel Band, Fine Gold,
Linen Thread, Sterling Silver



Iron can be strong and unmoving or strong and flexible as in Joohee Han's wire brooches. Inspired by cloud forms or groups of soap bubbles the delicacy of the steel wire pieces belies its strength and lightness.



Joohee Han
(Photographic image)
Stainless Steel



Marianne Anderson intricate iron and gold brooches celebrate traditions of decorative ironwork. As Anderson states “Ornament is not a crime” her pieces referencing wrought iron gates and also the delicacy of Berlin cast iron jewellery of early 19th century Germany.



Marianne Anderson

Cologne 1700 Dots Brooch White and yellow metal

Rebecca Steiner's work references city ironwork providing a map of Birmingham Industrial heritage

Rebecca Steiner

Features: Elements of the
City

Buttons / Pins

Silver, Mild Steel, Enamel,
Glass



Once referred to as the "Workshop of the World", Birmingham is famous for its industry. Records from 1880-1917 show an ever-changing city peppered with production. From small scale backgarden workshops to foundries and factories, Birmingham's metal industry put it firmly on the map.

These pieces locate the factories and foundries of times past and mark a connection between the old and the new. Follow the grid references to see how these spaces have changed over time.

Features

elements of the city

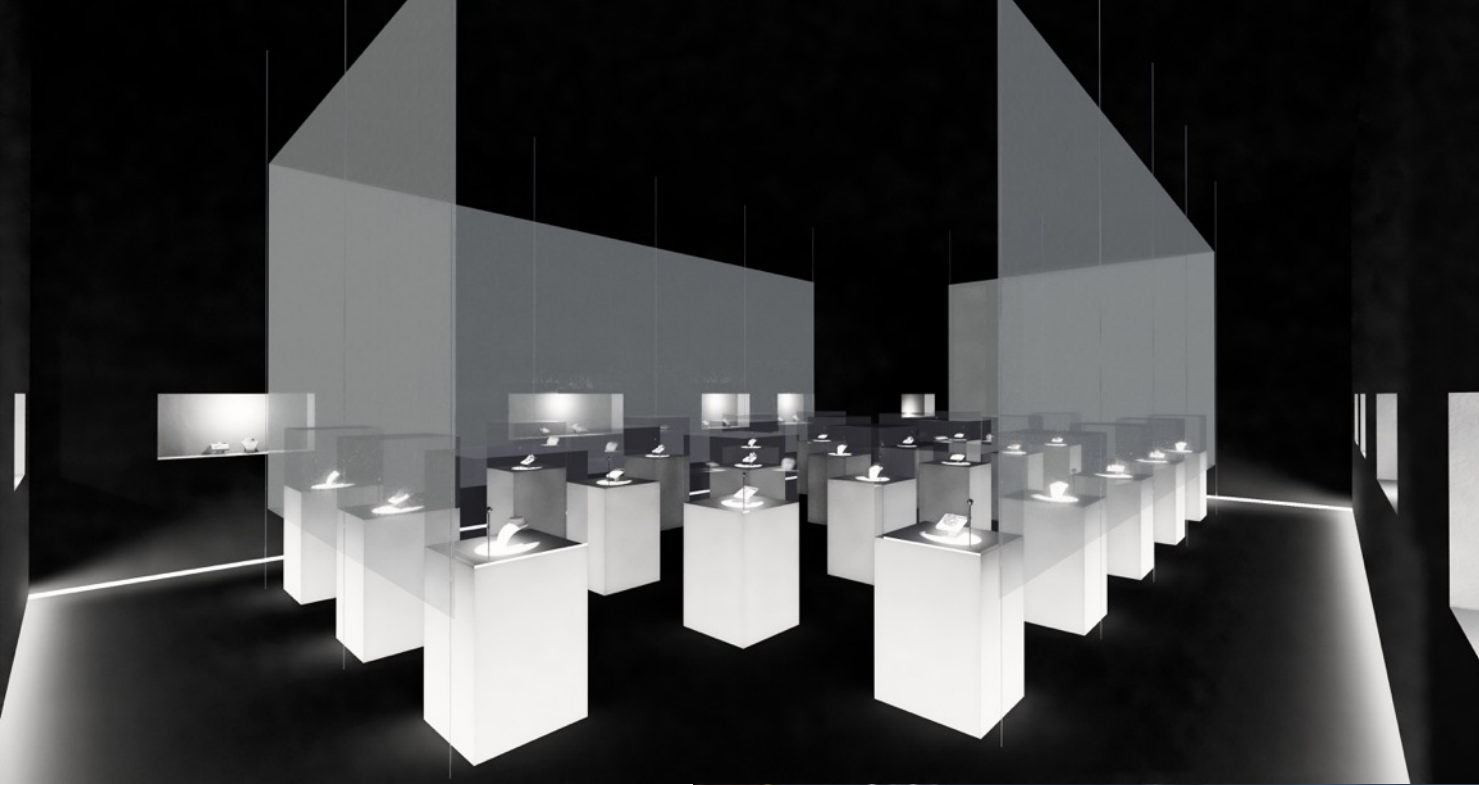




BIRMINGHAM CITY
University

School of
Jewellery

FERROcity
at Vitt
Street
Gallery
School
of
Jewellery
April
2019



FERROcity
at Beijing
Biennale
BIJF&T
October
2019



FERROcity
at AIVA
Shanghai
November
2019



FERRO CITY



Dauvit Alexander
Marianne Anderson
Jivan Astfalck
Stephen Bottomley
Tim Carson
Rachael Colley
Bettina Dittlmann
Christine Graf
Joohee Han
Kirsten Haydon
Jeremy Hobbins
Michael Jank
Bridie Lander
Anna Lorenz
Sarah O'Hana
Drew Markou
Toni Mayner
Simone Nolden
Jo Pond
Jo Pudelko
Rebecca Steiner
Elizabeth Turrell

21st February - 17th March
2019
Museum Reich der Kristalle
Mineralogische
Staatssammlung München
Theresienstraße 41, 80333
München, Germany

1st April - 18th April 2019
Vitt Street Gallery
School of Jewellery
Birmingham City University
B1 3PA, United Kingdom



BIRMINGHAM CITY
School of Jewellery



staatliche
naturwissenschaftliche
sammlungen bayerns



**Reich
der
Kristalle**

VittoriaStreetGallery



BIRMINGHAM CITY
University

School of
Jewellery