

My sketch represents water lily and a single leaf. There is a light diode inside the flower, and a switch inside the leaf. Leaf has a round, bulby shape with a bulge in the middle. It is made from felt and it is very soft when you touch it. You want to press it, when you see its shape and texture. By doing so, you make the flower light up. Both flower and the leaf are laid out on a black material, representing water.

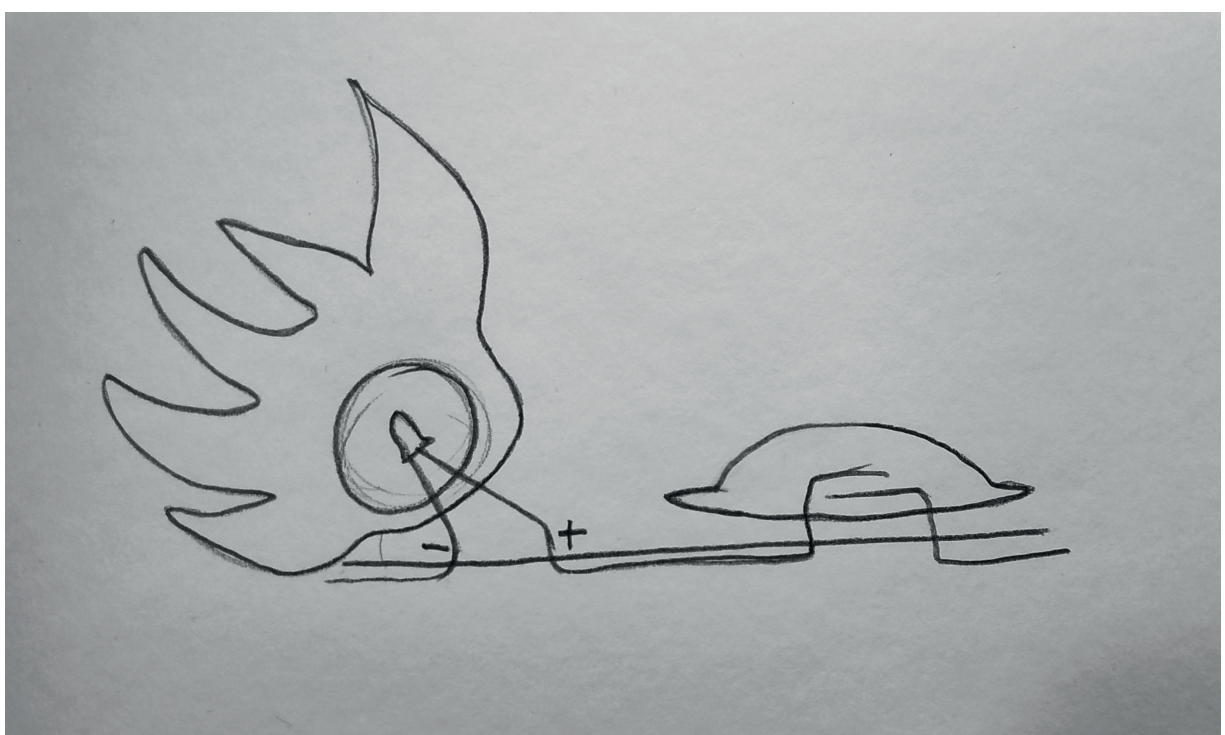


Image 1. Sketch of a sensor

Everything together should remind a lake full of water lilies in the middle of the night. My sketch is done in a small scale, but it is imagined as an element of a bigger project. In the bigger scale, people would enter a big room, with a dimmed light. Floor would be laid out with flowers and leaves, which people would jump on. That would light up the flowers. It would be an aesthetical and joyful experience.

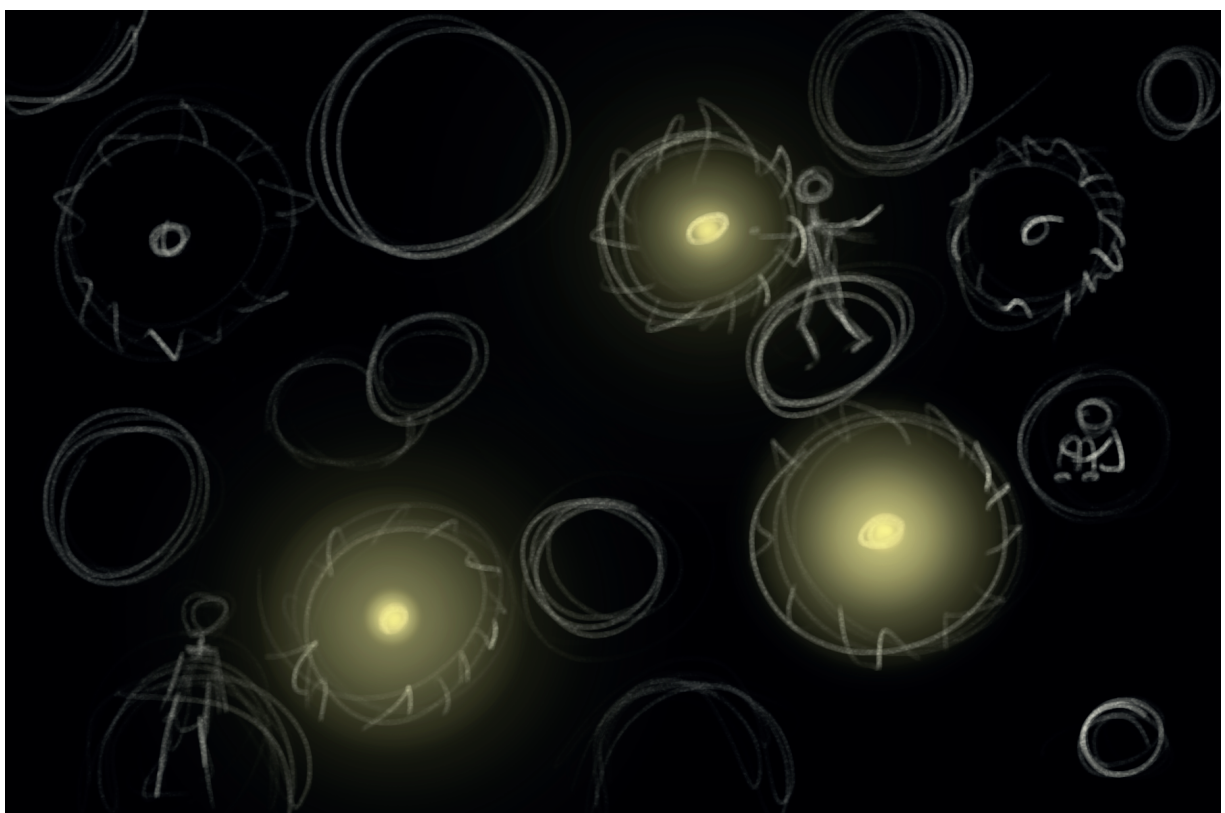


Image 2. Sketch of the room

The purpose of the project is to trigger people to make an action (jump on a leaf) and show them positive, beautiful output of it. It makes people feel in control and be a part of something beautiful. Hopefully it would give them joy and fun. Senses, that are most triggered by that project are sight and touch. It also stimulates imagination.

<https://youtu.be/Gs3COxCk6QY>